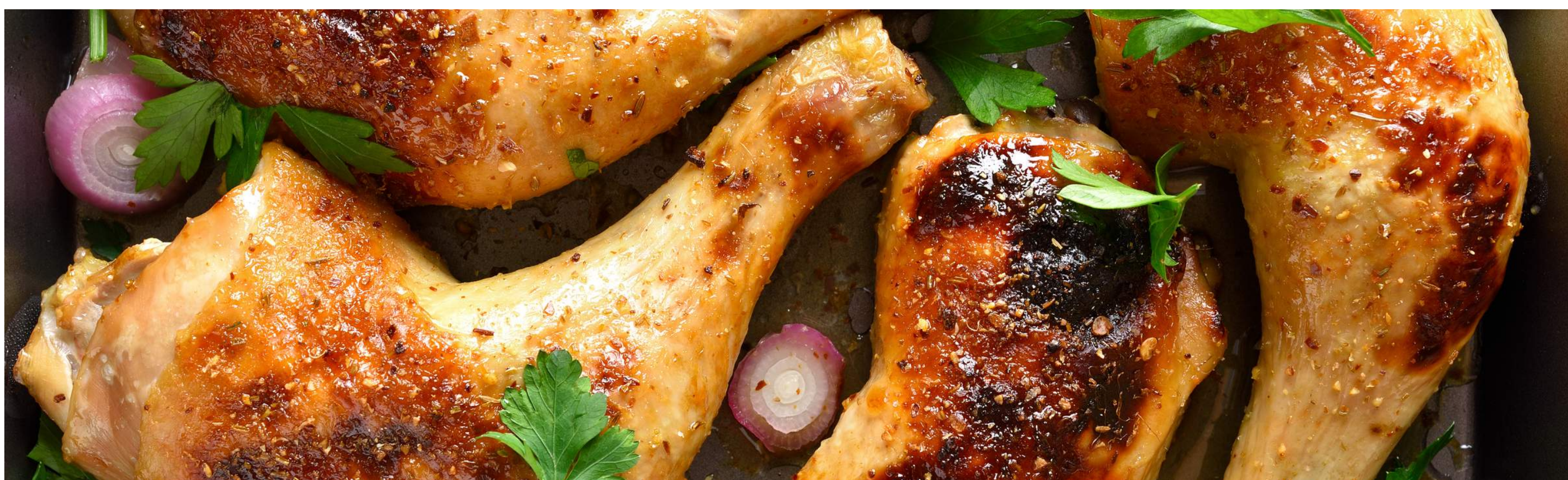


PREMIER PROTEINS

HIGH QUALITY FOOD SERVICE MEATS



WORLDWIDE
P R O D U C E

800-300-2737

WWPRODUCE.COM

BEEF

ITEM #	DESCRIPTION	*FROZEN	PACK SIZE
#13352	GROUND BEEF 80/20*		2/5LB
#13743	BEEF/LAMB GYRO MEAT* (GRECIAN DELIGHT)		2/5LB
#9439	WAGYU GROUND BEEF 80/20* (BROADLEAF)		10LB
#3845	BEEF HOT DOG 4-1 (HOFFY)		4/5LB
#15412	COOKED TOP ROUND ROAST BEEF SPLIT		~2/10LB
#20406	LONDON BROIL ROAST BEEF		~2/10LB
#19874	PRIME ANGUS TOMAHAWK		~5/40oz
#19966	CORNERED BEEF BRISKET		CASE
#19848	BLACKENED, SLICED PASTRAMI		~4/3LB
#15413	PEPPER PASTRAMI BEEF FILET		~2/8LB
#19713	SMOKED, BBQ PASTRAMI		~2/10LB
#14847	PEPPERONI-BEEF 38MM-SLICED (EZZO)		2/5LB

CHICKEN

ITEM #	DESCRIPTION	*FROZEN	PACK SIZE
#466	CHICKEN BREAST-BONELESS/SKINLESS		40LB
#13203	CHICKEN THIGH-BONELESS/SKINLESS*		4/10LB
#15417	CHICKEN BREAST-BONELESS/SKINLESS*		24/60Z
#914	CHICKEN BREAST-BONELESS/SKINLESS*		9LB
#19340	HOMESTYLE CHICKEN TENDERLOIN*		2/5LB
#50520	MEDITERRANEAN CHICKEN (ZOES MEATS)		~4/3LB
#10767	GOLDEN BUTTERMILK CHICKEN TENDER*		2/5LB
#14466	COOKED CHICKEN TENDER-GLUTEN FREE*		~2/5LB
#10769	"WING DING" COOKED CHICKEN WINGS		2/7.5LB
#10859	JUMBO CHICKEN WING PARTY MIX*		4/10LB
#10773	XL SAVORY CHICKEN WING COOKED*		2/7.5LB
#4703	JUMBO CHICKEN WINGS FRESH		40LB

SAUSAGE

ITEM #	DESCRIPTION	*FROZEN	PACK SIZE
#18890	SPANISH STYLE CHORIZO SAUSAGE*		10/5.5OZ
#17961	BREAKFAST SAUSAGE PATTY*		12/7.4OZ
#17962	HOT ITALIAN SAUSAGE*		8/14OZ
#17309	BREAKFAST SAUSAGE-TURKEY*		12/7OZ
#20919	PORK SAUSAGE (HOBBS)*		4/5LB
#16233	ITALIAN LINK SAUSAGE		5LB

PORK

ITEM #	DESCRIPTION	*FROZEN	PACK SIZE
#15581	APPLEWOOD BACON 14/16 (DAILYS)		15LB
#13122	APPLEWOOD BACON 10/12 (DAILYS)		15LB
#130	BACON 18/22-SLICED* (KRUSE)		25LB
#20452	BACON 14/16* (KRUSE)		25LB
#21198	BACON APPLEWOOD SLICED*		~2/5LB
#13122	APPLEWOOD BACON 10/12 (DAILYS)		15LB
#5269	APPLEWOOD BACON SLAB (ZOES MEATS)		~20LB
#16169	BACON ENDS & PIECES-BULK		15LB
#15583	BLACK FOREST HAM		2/9LB
#5318	BLACK FOREST HAM (ZOES)		~10LB
#50524	ARTISAN HAM (ZOES MEATS)		~4/4LB
#21195	APPLEWOOD HALF HAM BONELESS		~4/3.5LB
#15885	SERRANO HAM 16MO		~13LB
#13795	BILBAO CHORIZO		~10/1LB
#16168	PORK BELLY SKINLESS		~40LB
#50575	LARGE DIAMETER PEPPERONI (ZOES)		4/5LB
#14848	PEPPERONI-SLICED 38MM (GIANTONIO)		5/5LB

TURKEY

ITEM #	DESCRIPTION	*FROZEN	PACK SIZE
#11214	GOLDEN BROWNE D TURKEY BREAST		~2/9LB
#11216	HICKORY SMOKED TURKEY BREAST		~2/9LB
#15584	CLASSIC SMOKED TURKEY BREAST		~2/8-9LB
#11210	SKINLESS SEASONED TURKEY BREAST		~4/4LB
#5286	GARLIC HERB TURKEY BREAST (ZOE S)		~13LB
#11209	GROUND TURKEY 85%		~2/10LB
#16373	TURKEY BACON (APPLEGATE)		12/80Z

SEAFOOD

ITEM #	DESCRIPTION	*FROZEN	PACK SIZE
#16940	COD LOIN FILLET-80Z*		10LB
#18789	SMOKED TROUT* (ACME)		~10LB
#15818	OCTOPUS 4/6LB (ARISTA)*		28LB
#15820	OCTOPUS 6/8LB (ARISTA)*		33LB
#4739	SHRIMP 16/20 PEELED & DEVEINED, TAIL-ON		10LB
#15416	CALAMARI RINGS & TENTACLES*		4/2.5LB
#15827	SQUID PLATINUM 3-5*		6/2.5LB
#15828	SQUID PLATINUM 4-6*		6/2.5LB
#15829	SQUID RINGS & TENTACLES*		6/2.5LB
#13738	SMOKED SALMON-SLICED FJORD (S.B. SMOKEHOUSE)		~15/3LB
#5806	SMOKED SALMON-SLICED FJORD (S.B. SMOKEHOUSE)		3LB